



EDGAR

Width: 20.385m
Depth: 20.695m

-  5 bedrooms
-  2.5 bathrooms
-  2 car spaces
-  38 sq



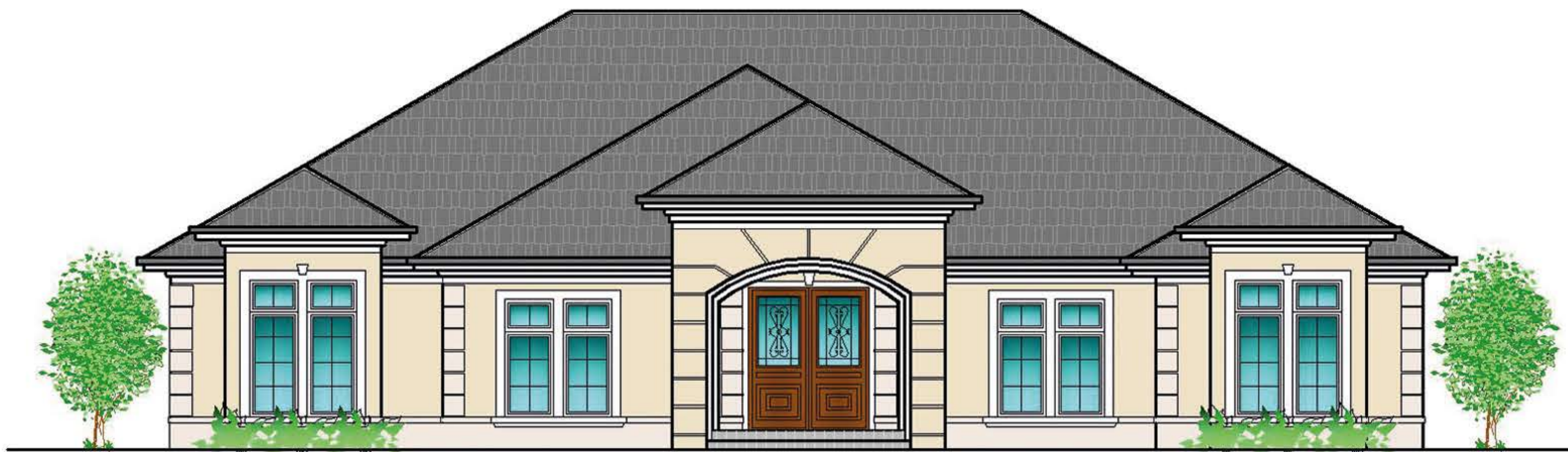
BAZDARIC
PRESTIGE BEAUTIFULLY CRAFTED HOMES
by Petar Baždarić



hampton's



modern



provincial

Based on Provincial Façade

Standard Inclusions;

- Rendered façade with bespoke feature mouldings
- Special plinth to front facade
- Bespoke bulkhead ceilings to entry area
- Highlights to front façade aluminium windows
- 2.7m ceilings with insulation to walls & ceilings
- High quality tiles to bathrooms, portico & alfresco
- Solid timber floorboards to main living areas
- Plush carpet to bedrooms & living
- 240mm bespoke skirtings
- 90mm bespoke architraves
- Wainscoting to entry & living walls
- Panel carve internal doors & plaster cornices
- Reverse cycle air conditioning by Actron
- Custom vanities & laundry cabinetry
- Custom kitchen in polyurethane, 40mm caesar tops
- Bosch appliances & LED downlights
- High quality tapware, fittings & toilets
- Semi-frameless clear glass shower screens

EDGAR

| | |
|---------------------|----------------------------|
| Ground Floor Living | 265.90m² |
| Garage | 40.60m² |
| Alfresco | 35.70m² |
| Portico | 8.68m² |
| Total | 350.88m² |

Not Included;

- Site Costs
- Council Fees
- Long Service Levy
- Landscaping/Driveway/Footpaths

